

LEVO Dealer: _____

Date: _____

Dealer reference / Client name: _____

Anglikerstrasse 20
CH-5610 Wohlen
Phone: +41 56 618 44 11
Fax: +41 56 618 44 10
e-mail: office@levo.ch

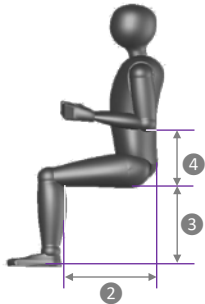
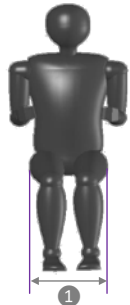
Order number: _____

Standard configuration 60.001.6802

- Power Base: width 66 cm, length 110 cm (incl. footplate)
- E/E Wheelchair: powered driving, sitting and standing
- Seat plate and backrest upholstery
- Flip-up armrests
- Height adjustable armrests
- Backrest length adjustment and armrests height adjustment
- Manual seat height adjustment
- R-Net control system with color display
- 48 Ah Batteries and Charger
- Standard shroud colors: white, red, blue or black
- Flip-up footrest
- Chest strap and knee support with wedge



Anthropometric Data



1 Hip width

Please check the correct box according to the measured hip width in a sitting position:

30 cm 38 cm

For the seat widths 30 and 35 a side pad is necessary. This makes the seat width narrower.

Seat width:	
30 cm	<input type="checkbox"/> Option
35 cm	<input type="checkbox"/> Option
38 cm	<input type="checkbox"/> Option

2 Upper leg length

Please fill in the measured upper leg length:

30 cm 37 cm

Seat depth:	
XS	27.0 cm <input type="checkbox"/> Option
	29.2 cm <input type="checkbox"/> Option
	31.4 cm <input type="checkbox"/> Option
	33.6 cm <input type="checkbox"/> Option
	35.8 cm <input type="checkbox"/> Option
S	

3 Lower leg length

Depending on the lower leg length or footplate height you can choose between a 22, 30 or 40 cm foot plate width. Choose a wider foot plate if a wider standing position is required.

Foot plate width:	22 cm	30 cm *	40 cm
23.6 cm	<input type="checkbox"/> Option	<input type="checkbox"/> Option	<input type="checkbox"/> Option
25.4 cm	<input type="checkbox"/> Option	<input type="checkbox"/> Option	<input type="checkbox"/> Option
27.2 cm	<input type="checkbox"/> Option	<input type="checkbox"/> Option	<input type="checkbox"/> Option
29.0 cm	<input type="checkbox"/> Option	<input type="checkbox"/> Option	
30.8 cm	<input type="checkbox"/> Option	<input type="checkbox"/> Option	
32.6 cm	<input type="checkbox"/> Option	<input type="checkbox"/> Option	
34.4 cm	<input type="checkbox"/> Option	<input type="checkbox"/> Option	
36.2 cm	<input type="checkbox"/> Option		
38.0 cm	<input type="checkbox"/> Option		
39.8 cm	<input type="checkbox"/> Option		
41.6 cm	<input type="checkbox"/> Option		
43.4 cm	<input type="checkbox"/> Option		
45.2 cm	<input type="checkbox"/> Option		
47.0 cm	<input type="checkbox"/> Option		

↑ Lower leg length:

4 Elbow height

Standard armrest height is 20 cm

15 cm 33 cm

Backrest height, for standard backrest

Please measure the distance between seat plate and lowest shoulder blade point:

cm

Please measure the anthropometric data as shown. If possible, the user should be in a sitting position and wearing shoes.

User weight

The weight of the user determines the force of the support wheel gas springs.
The maximum user weight is 120 kilograms. Please fill in the box:

	kg LEVO[®]
--	--------------------------------------

Controls



① R-Net control system "Standard":
- Color LCD Joystickmodule
- 120 A Power module
- Max. 6 actuators, multiple axes
- Controls lights
- Fully programmable, multiple profiles
- Expandable

	Standard
--	----------

② R-Net control system "XL", as R-net control system "Standard" with the following extras :
- 3.5" VGA color display
- Paddle switches for on/off, profile/mode and speed
- Metal case
- Loudspeaker instead of a buzzer for a louder horn

	60.075.0010
--	-------------

② R-Net control system "XL" with integrated bluetooth

	60.075.0030
--	-------------

Joystick Position



① Swing-away, offers more space for transfers and allows to drive closer to tables
② Joystick protection guard, shock protection for joystick, protects the users hands

Right	Standard
Left	Option

	60.005.6810
--	-------------

	60.012.6860
--	-------------

Attendant Controls



R-Net Attendant control
Connector Block for R-Net, needed for special controls

	32.068.1850
--	-------------

	32.068.1880
--	-------------

For special controls, see our Special controls order form.

Speed

6 km/h
8 km/h

	Option
--	--------

	Option
--	--------

Stability*



Gyro module

- Perfect control on cambers
- Straight line driving over obstacles
- Eliminates spin-out and fish-tailing

* This option is only available in Europe

	32.068.1000
--	-------------

Batteries

48 Ah
Without batteries, be aware net price is lower after discount
Without charger, be aware net price is lower after discount

	Standard
--	----------

	60.106.6810
--	-------------

	60.111.6710
--	-------------

Frame color

White
Red
Blue
Black

Blue metallic
Green metallic
Red metallic
Silver metallic

Orange reflex
Lemon reflex
Silver reflex

Other RAL color

	Standard
	Option
	Option
	Option

	60.008.0020
--	-------------

	60.008.0020
--	-------------

	60.008.0020
--	-------------

	60.008.0020
--	-------------

	60.008.0030
--	-------------

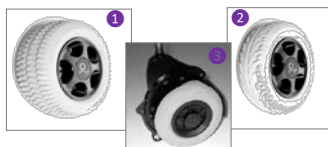
	60.008.0030
--	-------------

	60.008.0030
--	-------------

RAL:

	60.008.0010
--	-------------

Wheels



① Block profile drive wheels
② V-profile drive wheels
③ Curb Climber

	Standard
--	----------

	Option
--	--------

	60.002.0100
--	-------------

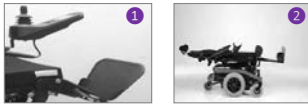
Lights



Lights and indicators for outdoor use

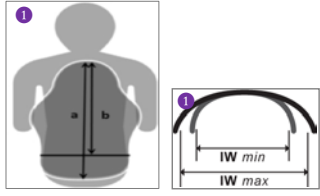
	60.012.6810
--	-------------

Seating **Electrical adjustments**



- Powered seat lift 150 mm 60.012.6820
 - ① Powered leg rest, *makes an angle adjustment of 90-180° possible, independent from the backrest* 60.012.6870
 - ② Combination of powered reclining back and powered leg rest
Enables a complete lying position and the function lying to standing is integrated. Enables a lying transfer. 60.012.6830
- Recommendation: order with additional V-Trak arms and head rest.*

Backrest



- Standard sling backrest Standard
 - V-Trak Axxis reduced height backrest, height 31 cm 60.009.0070
 - V-Trak Axxis low backrest, height 40 cm 60.009.0050
 - V-Trak Axxis high backrest, height 61 cm 60.009.0060
 - ③ V-Trak Axxis Deep contour
- | Size | M | L | XL | XXL |
|------------------|-------------------|-------------------|-------------------|-------------------|
| Type | inside 26 - 37 cm | inside 30 - 40 cm | inside 33 - 46 cm | inside 35 - 52 cm |
| a High | | | | |
| b Reduced height | | | | |
- Without backrest, *be aware net price is lower after discount* 60.109.6810

Backrest options



- ① Backrest extension 15 cm, *for standard backrest* 32.062.3815
 - ② Backrest extension with push handle bar and upholstery, *for standard backrest* 32.068.0761
- 15 cm**
25 cm
35 cm
- V-Trak Backrest extension, 20 cm 32.068.0762
- Additional V-Trak arms, *recommended when selecting reclining back* 32.068.0763
- 32.069.99
- 60.009.6810

Seat cushion, with memory foam depending on the seat depth and seat width



Seat width	30	35	38
Seat depth			
XXS	*	*	30.102.9271
XS	*	*	30.102.9272
S	*	*	30.102.9273

**For the seat widths 30 and 35 a side pad is necessary. This makes the seat width narrower.* 60.011.6810

Additional seat cushion cover

Seat width 38	Standard	Urin proof
Seat depth		
XXS	30.102.9477	30.102.9479
XS	30.102.9478	30.102.9480
S	30.102.9461	30.102.9481

**For the seat widths 30 and 35 a side pad is necessary. This makes the seat width narrower.* Standard

Headrest



- ① V-Trak headrest standard, *only in combination with V-Trak and Axxis backrest* 02.067.116
 - ② V-Trak headrest winged, *only in combination with V-Trak and Axxis backrest* 02.067.117
- Track extension for V-Trak head support, *for V-Trak 60 cm* 02.009.0028

Lateral supports and hardware



- V-Trak lateral support, pad and cover Medium Right 32.068.0030
- Medium Left 32.068.0040
- V-Trak lateral support, pad and cover Large Right 32.068.0010
- Large Left 32.068.0020

Knee support



- Standard knee support Standard
- ① Rectangular knee wedge 50 x 100 Option
- 60 x 100 Option
- 80 x 100 Option
- 50 x 150 Option
- 80 x 150 Option
- ② Conical knee wedge, *gives more support, in particular with spasticity* 50-100 x 100 60.011.0020
- 90-140 x 100 60.011.0020
- 130-180 x 100 60.011.0020
- ③ Knee support "Pro" Foam size S (10 - 12 cm) 60.011.0030
- Foam size M (14 - 16 cm) 60.011.0030

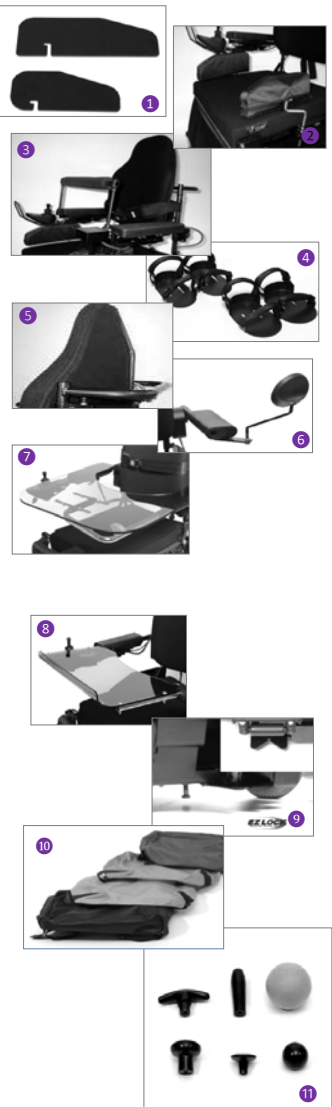
Foot plate

Foot plate depth	20 cm		Standard
Foot plate width	22 cm		60.003.6810
	30 cm		Standard
	40 cm		60.003.6820
Foot plate angle, <i>foot plate is angle adjustable in all three positions</i>	80°		Option
	90°		Standard
	100°		Option
① Foot plate wedge, <i>better positioning with spasticity or foot deformation</i>	50-100 x 80		30.101.8171
	80-130 x 80		30.101.8172
② Foot protection frame, <i>protects the users feet</i>			60.003.0100
Non-slip footrest surface			02.001.0702



Accessories

① Skirt guard	Pair		32.068.0825
② Upper leg support	Right		32.068.1751
	Left		32.068.1752
③ Chest role			32.068.1761
④ Foot guide	Small	Right	32.069.95
	Small	Left	32.069.96
	Large	Right	32.070.0040
	Large	Left	32.070.0041
⑤ Push handle bar, <i>can be used with Standard and V-Trak backrest</i>			32.068.0791
⑥ Rear view mirror	Right		32.068.0120
	Left		32.068.0120
⑦ Swing-away table tray, <i>can only be mounted on the opposite side of the joystick position</i>	Right		32.068.1061
	Left		32.068.1061
⑧ Fixed table tray			32.062.0038
Vehicle tie-down kit			32.068.1612
⑨ Support for QLK docking system, <i>without assembly cost</i> Assembly cost for EZ lock brackets			32.068.2050
			33.000.0000
⑩ Back pack	Red		30.100.0841
	Yellow		30.100.0843
	Blue		30.100.0842
	Black		30.100.0844
Cover against clamping danger			Option
⑪ Joystick top	T-bar		20.067.22
	Stick		20.067.23
	Softball		20.067.24
	Mushroom		20.067.25
	Chin		20.067.26
	Ball		20.067.27



Remarks