

LEVO Dealer:

Date:

Dealer reference / Client name:

Anglikerstrasse 20  
CH-5610 Wohlen  
Phone: +41 56 618 44 11  
Fax: +41 56 618 44 10  
e-mail: office@levo.ch

Order number:

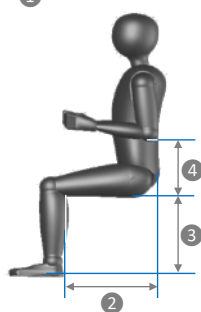
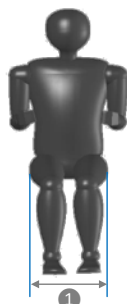
Standard configuration

60.001.6601

- Transport dimensions: width 45 cm, length 62 cm, height 43 cm (incl. footplate)
- M/E Wheelchair: Manual driving, seating and powered standing
- Seat plate and backrest upholstery
- Flip-up armrests
- Armrests height and angle adjustable
- Armrests round with built-in control switch
- Fold down backrest
- Standard colors: platinum, red, yellow, blue or black
- One-piece fixed footrest
- Pneumatic rear wheels and pump
- Batteries and battery charger
- Chest strap and knee support with wedge



### Anthropometric Data



#### 1 Hip width

Please fill in the correct box according to the measured hip width in a sitting position:

30 cm  35 cm

Seat width:

30 cm	<input type="checkbox"/>	Option
35 cm	<input type="checkbox"/>	Option

#### 2 Upper leg length

There are two seat frame sizes available for the Kid & Junior: XS and S. The upper leg length determines which frame size and which armrest size to choose for the wheelchair.

Please fill in the measured upper leg length:

Upper leg length:  
28 cm  45 cm

Example:

Upper leg length                    28 cm  
   - 4 cm  
**Seat upholstery depth            24.0 cm**

	Seat upholstery depth:		
XS	24.0 cm	<input type="checkbox"/>	Option
	26.0 cm	<input type="checkbox"/>	Option
	28.5 cm	<input type="checkbox"/>	Option
S	30.5 cm	<input type="checkbox"/>	Option
	33.0 cm	<input type="checkbox"/>	Option
	35.0 cm	<input type="checkbox"/>	Option

#### 3 Lower leg length

The lower leg length determines the footrest position and the seat height of the wheelchair. The seat height determines the wheel size and with that the total height of the wheelchair.

Please fill in the measured lower leg length:

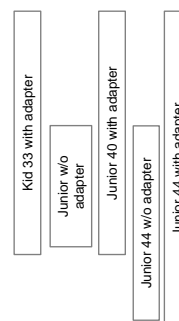
Lower leg length:  
19 cm  41 cm

Please check the desired seat height and footrest position, under consideration of the seat cushion thickness.

Example:

Lower leg length                    36 cm  
Seat cushion height                - 2.5 cm  
**Footrest position                    33.5 cm**

Now you may choose between seat height 33, 40 or 44 cm.



	Footrest position:		
Kid 33 with adapter	19.2 cm	<input type="checkbox"/>	Option
	21.0 cm	<input type="checkbox"/>	Option
	22.8 cm	<input type="checkbox"/>	Option
	24.6 cm	<input type="checkbox"/>	Option
	26.4 cm	<input type="checkbox"/>	Option
	28.2 cm	<input type="checkbox"/>	Option
	30.0 cm	<input type="checkbox"/>	Option
	31.8 cm	<input type="checkbox"/>	Option
	33.6 cm	<input type="checkbox"/>	Option
	35.4 cm	<input type="checkbox"/>	Option
Junior w/o adapter	35.2 cm	<input type="checkbox"/>	Option
	39.0 cm	<input type="checkbox"/>	Option
	40.8 cm	<input type="checkbox"/>	Option
Junior 40 with adapter			
Junior 44 w/o adapter			

Footrest adapter for short legs (Junior)

60.003.6610

#### 4 Elbow height

Standard armrest height is 16 cm

10 cm  22 cm

Please measure the anthropometric data as shown. If possible, the user should be in a sitting position and wearing shoes.

**Wheels and position, floor to seat height in the front, measured without seat cushion**

Rear wheel 16", castor 3"  
 Rear wheel 20", castor 5"  
 Rear wheel 22", castor 5"

Kid: 33 (30) cm  
 Junior: 40 (37) cm  
 Junior: 44 (41) cm

	Option
	Option
	Option

**Stand-up operation**



Right  
 Left

	Standard
	Option

**Control options**



- ① Hand control
- ② Dual switch for table tray control, *table tray not included*

	60.005.0040
	60.007.0010

**Frame color**

Platinum  
 Red  
 Yellow  
 Blue  
 Black

	Standard
	Option
	Option
	Option
	Option

Blue metallic  
 Green metallic  
 Red metallic  
 Silver metallic

	60.008.0020
	60.008.0020
	60.008.0020
	60.008.0020

Orange reflex  
 Lemon reflex  
 Silver reflex

	60.008.0030
	60.008.0030
	60.008.0030

Aluminium polished

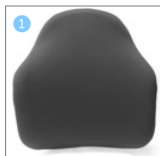
	60.008.0050
--	-------------

Other RAL color

RAL: \_\_\_\_\_

	60.008.0010
--	-------------

**Backrest**



Standard sling backrest height 24 cm

Height: \_\_\_\_\_

	Standard
--	----------

Backrest extension 15 cm, *for backrest height 30 cm the extension must be added*

	32.066.0410
--	-------------

- ① V-Trak Axxis reduced height backrest, height 31 cm
- V-Trak Axxis low backrest, height 40 cm
- V-Trak backrest extension, 13 cm

	60.009.0070
	60.009.0050
	32.066.0480

*without backrest, be aware net price is lower after discount*

	60.109.6810
--	-------------

**Backrest angle**

85°  
 90°  
 95°

	Option
	Standard
	Option

**Seat cushion with memory foam depending on the seat depth and seat width**



Seat width ►	30	35
Seat depth ▼		
XS	30.100.3760	30.100.0610
S	30.100.0660	30.100.3740



**Seat cushion cover**

Seat width ►	30	35
Seat depth ▼		
XS	30.100.3761	30.100.0611
S	30.100.0661	30.100.3741



**Urin proof seat cushion cover**

Seat width ►	30	35
Seat depth ▼		
XS	on request	on request
S	30.100.0663	30.100.3743



**Headrest**



- ① V-Trak headrest standard, *only in combination with V-Trak Axxis backrest*
- ② V-Trak headrest winged, *only in combination with V-Trak Axxis backrest*

	02.067.116
	02.067.117

### Lateral supports and hardware



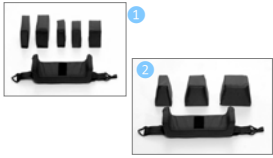
V-Trak lateral support, pad and cover

<b>Medium</b>	<b>Right</b>		32.068.0030
<b>Medium</b>	<b>Left</b>		32.068.0040

V-Trak lateral support, pad and cover

<b>Large</b>	<b>Right</b>		32.068.0010
<b>Large</b>	<b>Left</b>		32.068.0020

### Knee support



① Rectangular knee wedge

<b>50x100</b>		Option
<b>60x100</b>		Option
<b>50x150</b>		Option

② Conical knee wedge, *gives more support, in particular with spasticity*

<b>50-100x100</b>		60.011.0020
<b>90-140x100</b>		60.011.0020
<b>130-180x100</b>		60.011.0020

### Foot plate

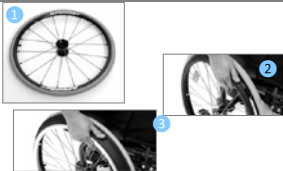
Foot plate angle

<b>70°</b>		Option
<b>80°</b>		Option
<b>90°</b>		Standard
<b>100°</b>		Option
<b>110°</b>		Option

Non-slip footrest surface

		60.003.0040
--	--	-------------

### Wheel options



① Spinegy wheels, *only for 22" wheels*

<b>Red</b>		60.002.0015
<b>Black</b>		60.002.0015
<b>White</b>		60.002.0015

② Maxgrepp original hand ring, with rubber cover, *only for 22" wheels*

		60.002.0060
--	--	-------------

③ Maxgrepp Ergo Para CP hand ring, *only for 22" wheels*

		60.002.0050
--	--	-------------

### Accessories



① Table tray

		32.070.0115
--	--	-------------

② Folding down stroller bar, *width adjustable*

		02.069.0030
--	--	-------------

③ Anti-tip for Kid

<b>Right</b>		32.066.0420
<b>Left</b>		32.066.0420

③ Anti-tip for Junior

<b>Right</b>		32.066.0430
<b>Left</b>		32.066.0430

④ Spoke guard transparent

<b>Paar</b>	<b>20"</b>		02.066.1013
<b>Paar</b>	<b>22"</b>		02.066.1014

⑤ Backpack

<b>Red</b>		30.100.0841
<b>Yellow</b>		30.100.0842
<b>Blue</b>		30.100.0843
<b>Black</b>		30.100.0844

⑥ Foot guide

<b>Right</b>		32.069.95
<b>Left</b>		32.069.96

⑦ Brake lever extension (6 cm)

<b>Right</b>		30.100.5030
<b>Left</b>		30.100.5030

⑧ Knee support height adapter, *for users with long lower leg lengths, knee holder gets closer to the joint*

<b>Pair</b>		32.069.85
-------------	--	-----------

⑨ Control switch extension

<b>Vertical</b>		32.066.0450
<b>Horizontal</b>		32.070.0156

⑩ Quick adjustment for seat depth / footrest (Set)

		60.004.0020
--	--	-------------

Quick adjustment for seat depth (Set)

		60.004.0030
--	--	-------------

