

LEVO Dealer:

Date:

Dealer reference / Client name:

Anglikerstrasse 20
CH-5610 Wohlen
Phone: +41 56 618 44 11
Fax: +41 56 618 44 10
e-mail: office@levo.ch

Order number:

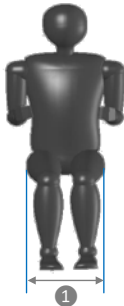
Standard configuration

60.001.7010

- Transport dimensions: width 60 cm, length 98 cm, height 45 cm (incl. footplate)
- M/E Wheelchair: Manual driving, seating and powered standing
- Seat plate and backrest upholstery
- Flip-up armrests
- Armrest height and armrest angle adjustable
- Armrests round with built-in control switch
- Fold down backrest
- Standard colors: platinum, red, yellow, blue or black
- Two-piece flip-up footrest
- Pneumatic rear wheels and pump
- Batteries and battery charger
- Chest strap and knee support with wedge



Anthropometric Data



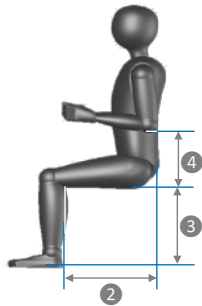
1 Hip width

Please check the correct box according to the measured hip width in a sitting position:

35 cm 48 cm

Seat width:

35 cm	60.004.7010
38 cm	Option
40 cm	Option
42 cm	Option
45 cm	Option
48 cm	Option
50 cm	60.004.7020



2 Upper leg length

There are two seat frame sizes available for the LCEV: S - M and L - XL. The upper leg length determines which frame size and which armrest size to choose for the wheelchair.

Please fill in the measured upper leg length:

Upper leg length:
35 cm 62,2 cm

Example:

Upper leg length 35 cm
 - 6 cm
Seat upholstery depth 29.0 cm

Seat upholstery depth:

S-M Frame	29.0 cm	Option
	31.2 cm	Option
	33.4 cm	Option
	35.6 cm	Option
	37.8 cm	Option
40.0 cm	Option	
L-XL Frame	43.0 cm	Option
	45.2 cm	Option
	47.4 cm	Option
	49.6 cm	Option
	51.8 cm	Option
54.0 cm	Option	

3 Lower leg length

The lower leg length determines the footrest position and the seat height of the wheelchair. The seat height determines the wheel size and with that the total height of the wheelchair.

Please fill in the measured lower leg length:

Lower leg length:
36 cm 56 cm

Please check the desired seat height and footrest position, under consideration of the seat cushion thickness.

Example:

Lower leg length 51 cm
Seat cushion height - 3 cm
Footrest position 48 cm

Seat height 48
Seat height 51
Seat height 54
Seat height 57

Footrest position:

36 cm	Option
38 cm	Option
40 cm	Option
42 cm	Option
44 cm	Option
46 cm	Option
48 cm	Option
50 cm	Option
52 cm	Option
54 cm	Option
56 cm	Option

Now you may choose between seat height 51, 54 or 57 cm

Please measure the anthropometric data as shown. If possible, the user should be in a sitting position and wearing shoes.

4 Elbow height

Standard armrest height is 18 cm

14 cm 22 cm

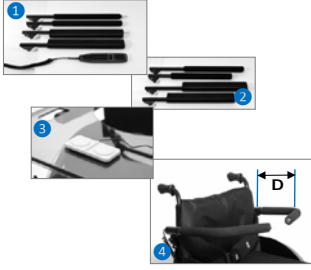
Wheels and position

Floor to seat height in the front, measured without seat cushion

Rear wheel 22", castor 5" **48 cm**
 Rear wheel 24", castor 5" **51 cm**
 Rear wheel 24", castor 5" **54 cm**
 Rear wheel 26", castor 6" **57 cm**

	Option
	Standard
	Option
	60.004.0010

Armrest



- ① Armrest round with hand control
- ① Armrest 6 cm/2.4" wide with built-in control switch*
- ① Armrest 6 cm/2.4" wide with hand control*
- ② Armrest 5 cm/2" longer
*Not in combination with swing-away chest support
- ③ Dual switch for table tray control, table tray not included
- ④ Swing-away chest support
Rotatable to the side and flip-up, for increased safety feeling.
Distance "D" between backrest tube and the beginning of radius, see photo

	60.005.0040
	60.005.7010
	60.005.7020
	60.005.7030
	60.007.0010
D	
27 cm	60.005.7040
32 cm	60.005.7041
37 cm	60.005.7042

Stand-up operation



Right Standard
 Left Option

Frame color

- Platinum
- Red
- Yellow
- Blue
- Black
- Blue metallic
- Green metallic
- Red metallic
- Silver metallic
- Orange reflex
- Lemon reflex
- Silver reflex
- Aluminium polished
- Traffic white
- Other RAL color

RAL: **9016**
 RAL: _____

	Standard
	Option
	Option
	Option
	Option
	60.008.0020
	60.008.0020
	60.008.0020
	60.008.0020
	60.008.0030
	60.008.0030
	60.008.0030
	60.008.0050
	60.008.0010
	60.008.0010

Backrest

Standard sling backrest height

31 cm
33 cm
35 cm
37 cm
39 cm
41 cm

	Standard
	Option
	Option
	Option
	Option
	Option

- V-Trak Axxis reduced height backrest, height 31 cm
- V-Trak Axxis low backrest, height 40 cm
- V-Trak Axxis high backrest, height 61 cm

	60.009.0070
	60.009.0050
	60.009.0060

Without backrest, be aware net price is lower after discount

	60.109.6810
--	-------------

Backrest options

Backrest extension 15 cm, for standard backrest

Seat width ►	35	38	40	42	45	48	50
Height ▼							
15 cm	32.064.1735	32.064.1738	32.064.1740	32.064.1742	32.064.1745	32.065.1748	32.065.1750

V-Trak backrest extension, 20 cm/8"

	32.069.99
--	-----------

Seat cushion with memory foam depending on the seat depth and seat width



Seat width ▶	35	38	40	42	45	48	50
Seat depth ▼							
S	30.100.3740	30.100.3770	30.100.3780	30.100.3790	30.100.3800	30.100.3802	30.100.3803
M	30.100.3822	30.100.3820	30.100.3830	30.100.3840	30.100.3850	30.100.3855	30.100.3856
L	30.100.3857	30.100.3860	30.100.3870	30.100.3880	30.100.3890	30.100.3900	30.100.3902
XL	30.100.3907	30.100.3910	30.100.3920	30.100.3930	30.100.3940	30.100.3950	30.100.3956

Additional seat cushion cover

Seat width ▶	35	38	40	42	45	48	50
Seat depth ▼							
S	30.100.3741	30.100.3771	30.100.3781	30.100.3791	30.100.3801	30.100.3804	30.100.3805
M	30.100.3823	30.100.3821	30.100.3831	30.100.3841	30.100.3851	30.100.3854	30.100.3953
L	30.100.3858	30.100.3861	30.100.3871	30.100.3881	30.100.3891	30.100.3901	30.100.3903
XL	30.100.3908	30.100.3911	30.100.3921	30.100.3931	30.100.3941	30.100.3951	30.100.3957

Urin proof seat cushion cover

Seat width ▶	35	38	40	42	45	48	50
Seat depth ▼							
S	30.100.3743	on request	on request	on request	on request	on request	on request
M	30.100.3824	30.100.3864	on request	on request	on request	on request	on request
L	on request	30.100.3863	30.100.3873	on request	30.100.3892	on request	on request
XL	on request	on request	on request	on request	on request	on request	on request

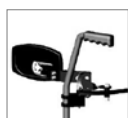
Headrest



V-Trak headrest standard, *only in combination with V-Trak Axis backrest*
 V-Trak headrest winged, *only in combination with V-Trak Axis backrest*
 Track extension for V-Trak head support, for V-Trak 60 and 80 cm

	02.067.116
	02.067.117
	02.009.0028

Lateral supports and hardware



V-Trak lateral support, pad and cover

Medium Right

	32.068.0030
	32.068.0040

V-Trak lateral support, pad and cover

Large Right

	32.068.0010
	32.068.0020

Knee support



Standard knee support

	Standard
--	----------

① Rectangular knee wedge

50x100
60x100
80x100
50x150
80x150

	Option
	Option
	Option
	Option
	Option

② Conical knee wedge, *gives more support, in particular with spasticity*

50-100x100
90-140x100
130-180x100

	60.011.0020
	60.011.0020
	60.011.0020

③ Sports knee support

	60.011.0050
--	-------------

④ Rigid knee support

Size S (10 - 12 cm)
Size M (14 - 16 cm)

	60.011.0060
	60.011.0060

Footrest



Two-piece flip-up footrest

	Standard
--	----------

① One piece footrest, fixed

	Option
--	--------

② One piece footrest, flip-up backwards,
not in combination with footrest height adapter

	60.003.0050
--	-------------

③ Footrest height adapter

For seat width 38, 45, 48
For seat width 40 and 42 cm*

	60.003.0070
	60.003.0080

*For users with short lower leg length. Footrest will be 3 cm narrower than the seat width.
Only possible with one piece fixed footrest.

Footrest



- ④ Easy transfer foot plate, *foot plate is closer to the floor which makes transfers easier*

20 cm	<input type="checkbox"/>	60.003.0120
26 cm	<input type="checkbox"/>	60.003.0130
	<input type="checkbox"/>	60.003.0060
	<input type="checkbox"/>	60.003.0040

Legrest removable for transport

Non-slip footrest surface

Foot plate angle

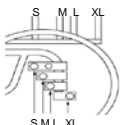
Foot plate is adjustable in all three angles.

80°	<input type="checkbox"/>	Option
90°	<input type="checkbox"/>	Standard
100°	<input type="checkbox"/>	Option

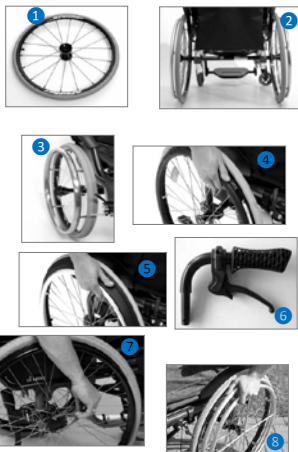
Rear wheel position

Select the appropriate setting for the rear wheels. The shorter the wheelbase is, the more active the wheelchair becomes and the risk of tipping over gets larger. Anti-tip aids are recommended in that case. Normally the wheels are positioned according to the frame size.

S	<input type="checkbox"/>	Option
M	<input type="checkbox"/>	Option
L	<input type="checkbox"/>	Option
XL	<input type="checkbox"/>	Option



Wheel options



- Rear wheels with airless tires
- Rear wheels with black marathon plus tires, *only in combination with air tyres and aluminium hand ring*
- ① Spinergy wheels
Not available in combination with hub locking brake, drum brakes or one arm drive
- ② Camber, *not in combination with hub locking brake, drum brakes or one arm drive*
- ③ Steel hand rim
- ④ Maxgrepp original hand ring, with rubber cover
- ⑤ Maxgrepp Ergo Para CP hand ring
- ⑥ Rear wheels with drum brakes
- ⑦ Rear wheels with hub locking brake
- ⑧ One arm drive, *only in combination with standard wheels*

	<input type="checkbox"/>	60.002.0010
	<input type="checkbox"/>	60.002.0090
Red	<input type="checkbox"/>	60.002.0015
Black	<input type="checkbox"/>	60.002.0015
White	<input type="checkbox"/>	60.002.0015
3°	<input type="checkbox"/>	60.002.0080
6°	<input type="checkbox"/>	60.002.0080
Pair	<input type="checkbox"/>	60.002.0070
	<input type="checkbox"/>	60.002.0060
	<input type="checkbox"/>	60.002.0050
	<input type="checkbox"/>	60.002.0025
	<input type="checkbox"/>	60.002.0020
	<input type="checkbox"/>	60.002.0030

Accessories



- ① Table tray

35	38 - 40	42 - 50
<input type="checkbox"/>	<input type="checkbox"/>	<input type="checkbox"/>
32.070.0115	32.070.0116	32.070.0117
- ② Swing away table tray, *only possible with combi armrest and hand control*

35 - 40	42 - 50
<input type="checkbox"/>	<input type="checkbox"/>
32.068.1061	32.068.1062
- Combi armrest / handcontrol
- ③ Push handles standard
- ④ Push handles 7 cm extended
- ⑤ Push handles quick release height adjustable
- ⑥ Anti-tip rolls

S - M	L	XL 54	XL 57
<input type="checkbox"/>	<input type="checkbox"/>	<input type="checkbox"/>	<input type="checkbox"/>
32.069.68	32.069.69	32.069.70	32.069.71

Please select the size which corresponds with the seat height and frame size chosen on page 1
- ⑦ Anti-tip / tip aid combination, swing away

XL-Adapter, *needed for rear wheel position XL*
XL-Adapter, *needed for rear wheel position XL*
- ⑧ Tip aid

Right	<input type="checkbox"/>	
Left	<input type="checkbox"/>	
	<input type="checkbox"/>	32.070.0110
Pair	<input type="checkbox"/>	32.069.0080
Pair	<input type="checkbox"/>	32.069.0090
Pair	<input type="checkbox"/>	32.070.0167
Right	<input type="checkbox"/>	
Left	<input type="checkbox"/>	
Right	<input type="checkbox"/>	32.070.0162
Left	<input type="checkbox"/>	32.070.0162
Right	<input type="checkbox"/>	32.070.0165
Left	<input type="checkbox"/>	32.070.0166
Right	<input type="checkbox"/>	32.069.72
Left	<input type="checkbox"/>	32.069.72

Accessoires



⑨ Spoke guard transparent

22"	24"	26"
02.066.1014	02.066.1015	02.066.1017

Other spoke guards on request

Pair



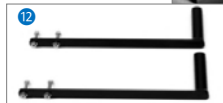
⑩ Foot guide

small	Right		32.069.95
small	Left		32.069.96
large	Right		32.070.0040
large	Left		32.070.0041



⑪ Brake lever extension (6 cm)

Right		30.100.5030
Left		30.100.5030



⑫ Frame reinforcement kit, *Needed when e-fix or similar systems are mounted. Only in combination with anti-tip swing away, not with anti-tip rolls or tip aid.*

	32.065.68
--	-----------

Vehicle tie-down kit, *fixed attachment points for chair transport. Frame reinforcement kit is included*



35	38	40	42	45	48	50
32.070.0501	32.070.0502	32.070.0503	32.070.0503	32.070.0504	32.070.0505	32.070.0506



⑬ Knee support height adapter, *for users with long lower leg lengths, knee holder gets closer to the joint.*

Pair		32.069.85
------	--	-----------



⑭ Control switch extension

Vertical for round armrest		32.066.0450
Vertical for wide armrest		32.062.1842
Horizontal		32.070.0156

⑮ Seat depth and footrest quick adjustment kit, *10 clamps with bolt, 4 screws*

	60.004.0020
--	-------------

Remarks